

EML4-ALK

Catalog Number: 26242

Gene Symbol: EML4-ALK

Description: Anti-EML4-ALK Mouse Monoclonal Antibody

Background: EML4-ALK is a fusion-type protein kinase that can be found in many tumors, such as anaplastic large cell lymphoma, inflammatory myofibroblastic tumor, neuroblastoma and NSCLC, and so on. It is generated as a result of a small inversion within the short arm of human chromosome 2. EML4-ALK protein often promotes and maintains the malignant behavior of the cancer cells by activating the MAPK, PI3K/AKT and JAK/STAT3 pathways.

Immunogen: A synthetic peptide from the internal region of EML4-ALK of human origin.

Tested applications: ELISA, WB, IHC

Recommended dilutions:

ELISA: 1:1000-1:2000

WB: 1:500-1:1000

IHC: 1:50-1:100

Concentration: 1 mg/ml

Host: Mouse

Clonality: Monoclonal

Purity: Purified from ascites

Format: Liquid

Storage buffer:

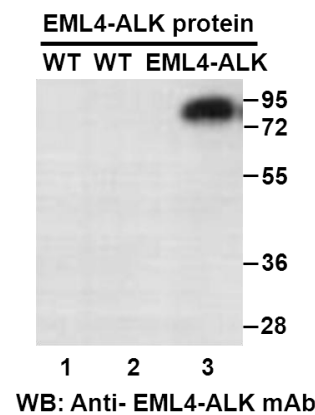
Preservative: no

Constituents: PBS (without Mg^{2+} and Ca^{2+}), pH 7.4, 150 mM NaCl, 50% glycerol

Species Reactivity: Recognizes T41A mutant, but not wild-type EML4-ALK of vertebrates.

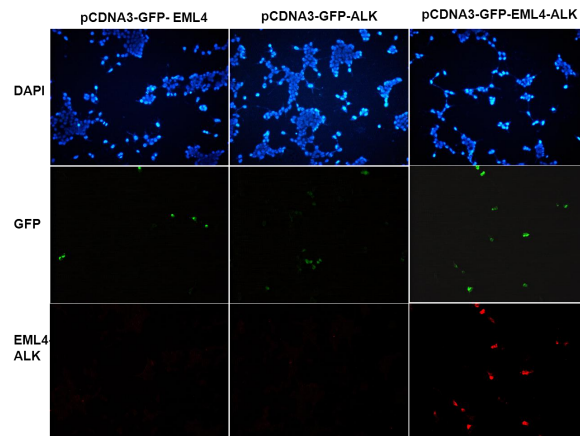
Storage Conditions: Store at $-20^{\circ}C$. Avoid freeze / thaw cycles.

Western blot:



Western blot analysis of recombinant EML4-ALK and wildtype proteins. Purified His-tagged EML4-ALK protein (lane 3), corresponding wild-type EML4 protein (lane1) and wild-type ALK protein (lane2) were blotted with anti-EML4-ALK monoclonal antibody (Cat. #26242).

Immunofluorescence:



Immunofluorescence of cells expressing EML4-ALK proteins with anti-EML4-ALK antibody. HEK293T cells were transfected with pCDNA3-GFP-EML4 (WT) plasmid (left column) or pCDNA3-GFP-ALK (WT) plasmid (middle column) or pCDNA3-GFP-EML4-ALK plasmid (right column), then fixed and stained with anti-EML4-ALK monoclonal antibody (Cat. #26242).